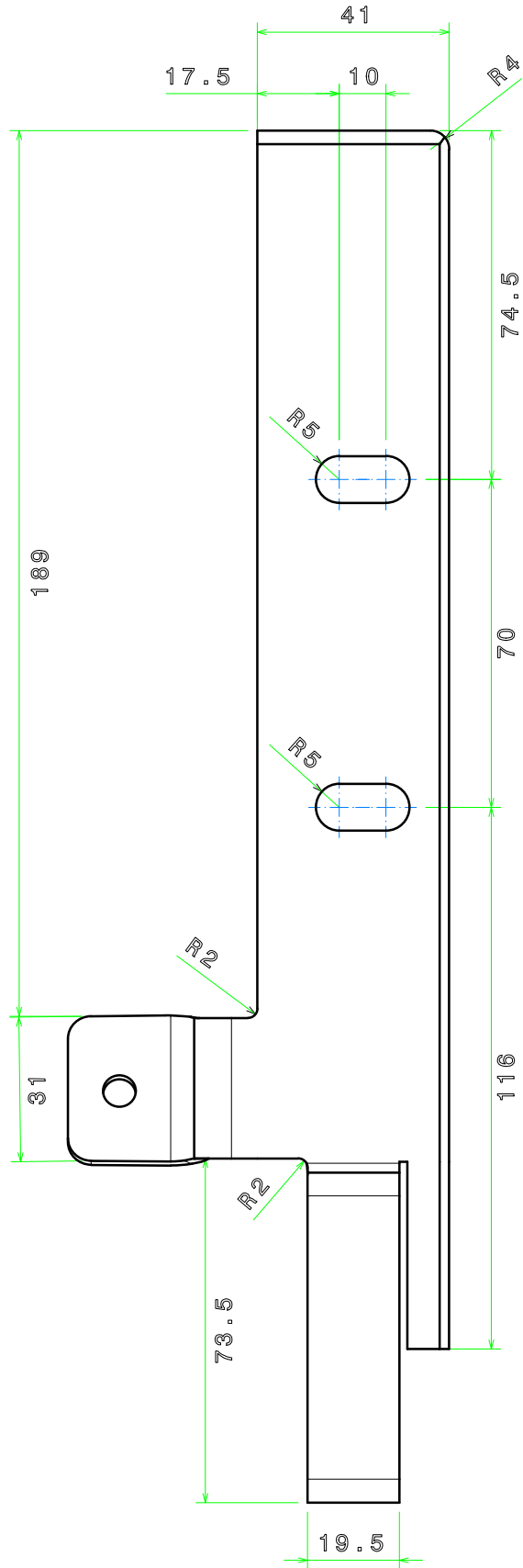
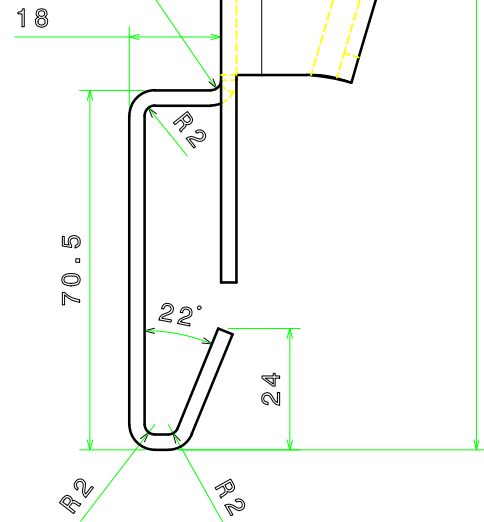
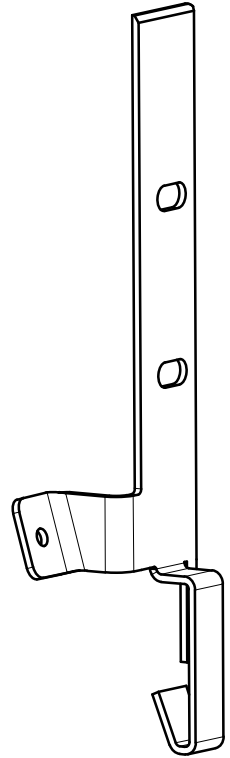


Reproduction, dissemination or use of this document or its all contents in any form without the prior written permission of TURASAS, is prohibited. All rights reserved in the event of the grant of a patent, utility model or ornamental design registration.

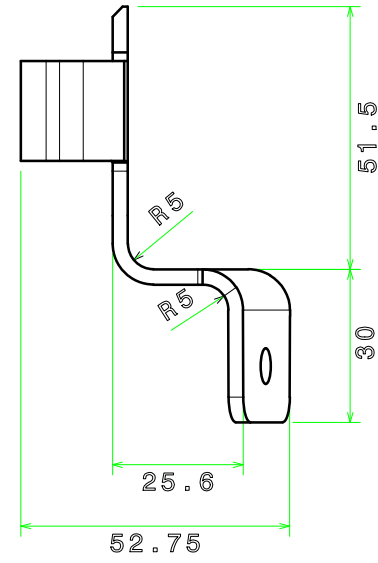
ISO 13920 Welded Construction ISO 2768 General Tolerances TS 12708 Steel Casting			
<1000	6,0	0,8	
<630	4,0	0,7	
<400	3,0	0,6	
<250	3,0	0,4	
100	2,0	0,3	
40	1,5	0,2	
L mm	Ham	Ypl.	
Norm. Size	Class		
<4000	2,0	0,4	
<2000	1,2	0,4	
<1000	0,8	0,3	
<400	0,5	0,3	
30-120	0,3	0,2	
2-30	0,2	0,1	
L mm	m ±	K ±	
Norm. Size	Class		
>20000	9,0	8,0	
<20000	8,0	7,0	
<18000	7,0	6,0	
<12000	6,0	5,0	
<8000	5,0	4,0	
<4000	4,0	3,0	
<2000	3,0	2,0	
<1000	2,0	1,5	
<400	1,0	1,0	
30-120	1,0	0,5	
2-30	1,0	0,5	
L mm	A ±	E ±	
Norm. Size	Class		



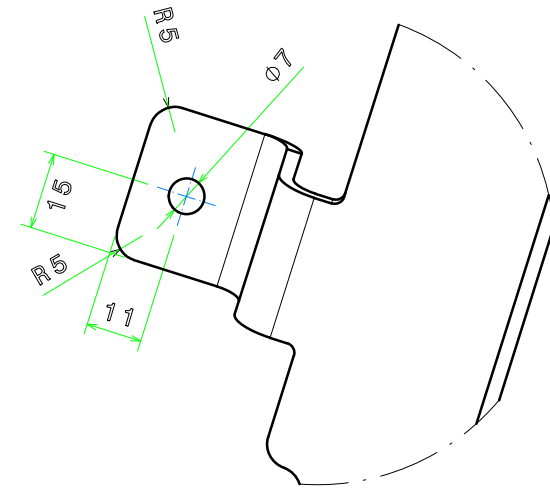
Isometric view



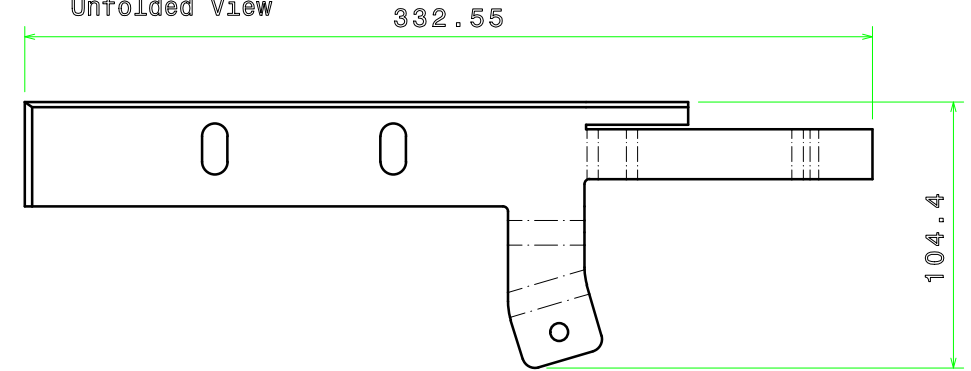
View from A



View from B




Unfolded View



Ra 12.5  
(✓) (✓)

Edge without dimension according to DIN ISO 13715  
-0.3 +0.3

Tolerance for holes and shafts without marks on drawing  
Hole H12-Shaft h12

				S355J2 EN10025		3x104.4x332.55		
No	Parça Adı Designation Name of Item	Adet Qty.	Resim No / Norm Drawing No / Norm	Malzeme Material	Ölçü Dimension	Ağırlık Weight (Kg)		
TYP	ISO 21920-1	ISO 8015	ISO 2553	General Tol.	ISO 2768	f <input type="checkbox"/>	mD <input type="checkbox"/>	H <input type="checkbox"/> K <input checked="" type="checkbox"/>
	EN 15085-2 Certification Level		CL1 <input type="checkbox"/> CL2 <input type="checkbox"/> CL3 <input type="checkbox"/>	Weld Pro. Cast Steel	ISO 13920	A <input type="checkbox"/>	B <input type="checkbox"/>	E <input type="checkbox"/> F <input type="checkbox"/>
	Approved	L.Giovinazzo	26/01/2023	Scale	<div>TURASAS</div> <div>Turkish Railway Vehicles Industry Inc.</div> <div>GZ10.21.12.94002</div>			
	Checked	M.Borio	26/01/2023	1:1				
	Prepared	M.D.Cojocar	26/01/2023					
	<div></div> <div>Bending_Sheet</div>							